

LUCIO'S

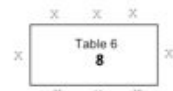
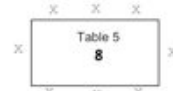
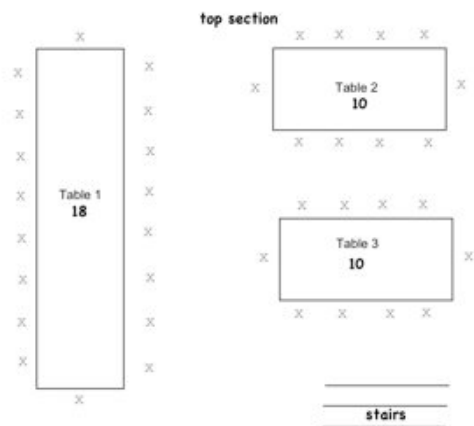
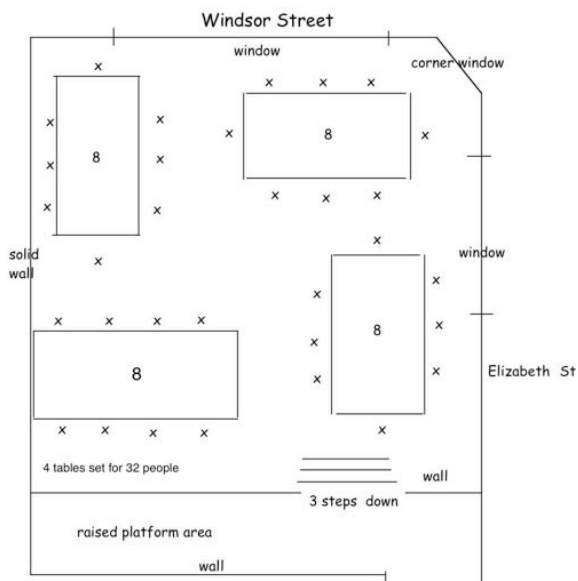
italian restaurant

A guide to seating for group bookings (not to scale)

AREA	NO OF TABLES	SHAPE	BEST FOR	MAX SEATS POSSIBLE	BEST CONFIGURATION
PRIVATE ROOM Seats 32	One	U Shape	20-26	1x26	6,6,6,3,3,1,1,
		Square	16	1x16	4,4,4,4,
		Royal Rectangle	12-18	1x18	6,6,3,3,
	Two	Rectangles	26	1x14 1x12	6,6,1,1 5,5,1,1
Four	Rectangles	32	4x8	3x(3,3,1,1) 1x(4,4)	
MAIN ROOM Seats 60	Six	Rectangles	40-55	1 x 18 2 x 10 2 x 8 1x 6	8,8,1,1, 4,4,1,1, 3,3,1,1, 2,2,1,1, or round

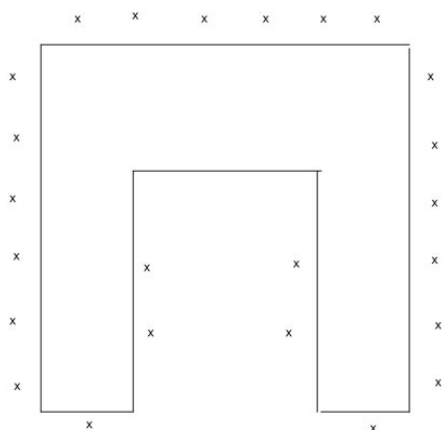
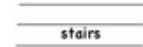
Private room for 32

Main Room for 60



middle section

Lucio's Italian Restaurant
Tables set for 60 pax
Not to scale



Private room for 24