

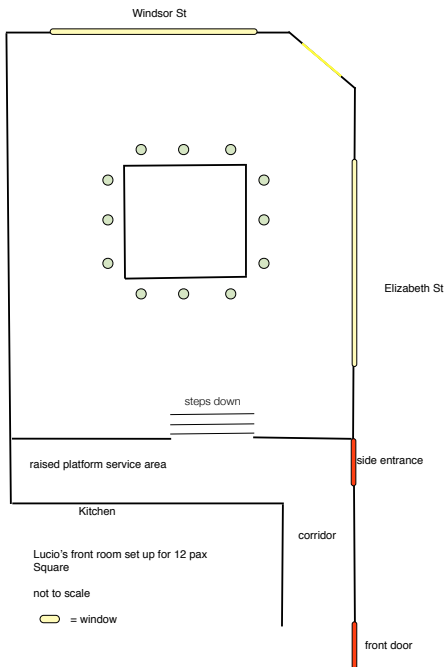
LUCIO'S

italian restaurant

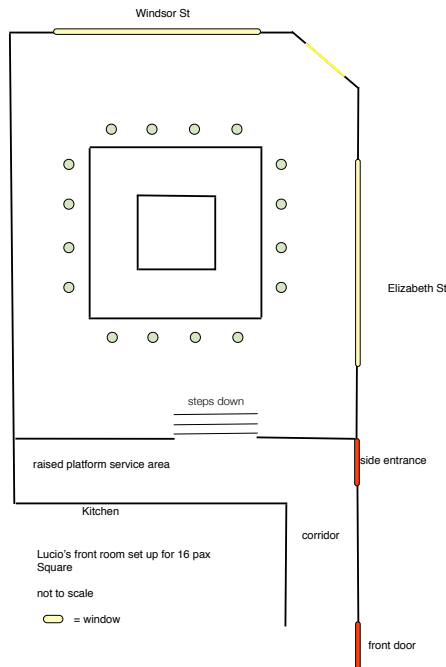
A guide to seating plans for group bookings in the front room (not to scale)

Area	Tables	Shape	Suits	Max seats	Configuration
Front	One	Square	16	16	4,4,4,4
		Royal Rectangle	12-18	18	various
		U shape	19-26	26	6,6,6,4,4
	Two	Rectangles	26	1x14 1x12	6,6,1,1 5,5,1,1
Four	Rectangles	32	4x8	3x(3,3,1,1) 1x(4,4)	
Main	Six	5-Rectangles 1-Round	33-58	1 x 16 2 x 10 2 x 8 1 x 6	7,7,1,1, 5,5 3,3,1,1 6
Other	One	Rectangle	12	12	5,5,1,1

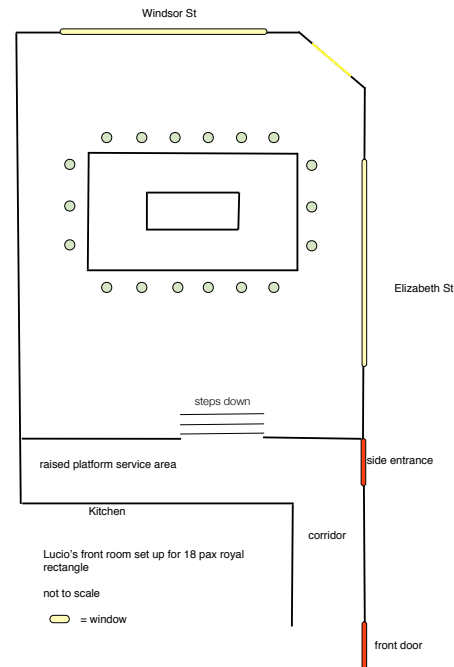
12 pax square



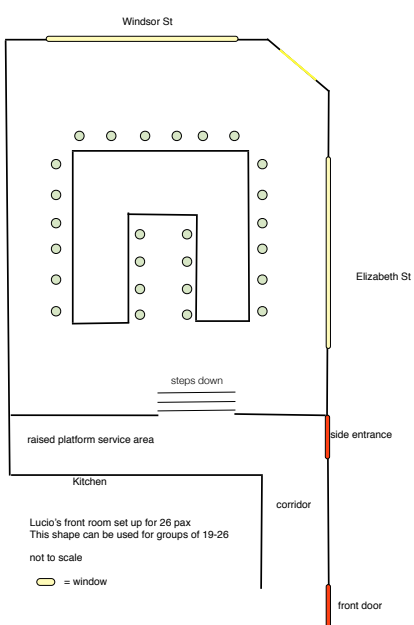
16 pax square



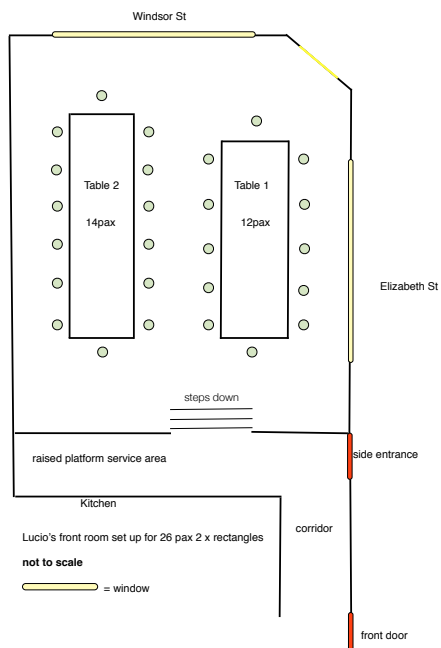
18 pax royal rectangle



26 pax U shape



26 pax 2 tables



32 pax 4 tables

